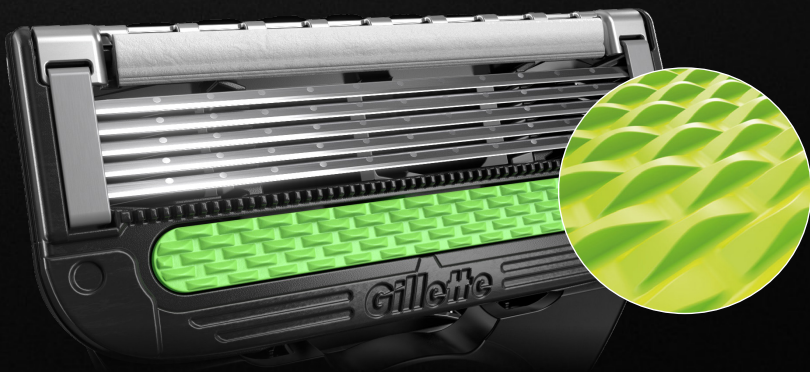


Gillette Labs™

WITH EXFOLIATING BAR

**COMBINES SHAVING
AND EXFOLIATING INTO
1 EFFICIENT STROKE**



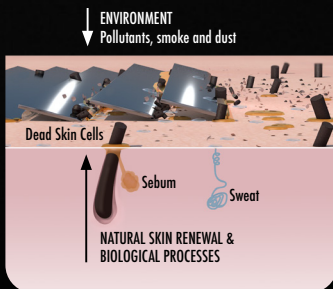
FLEXDISC PIVOT
contours to your face
to ensure comfort and
great skin contact with
every stroke

METAL HANDLE
with premium design

MAGNETIC STAND
for upright storage
of the razor between
uses (and to allow it
to optimally dry in
upright position)

THE TEXTURED BAR

with raised 'scallops' located in front of the blades helps to 'sweep' the debris away from in front of the blades



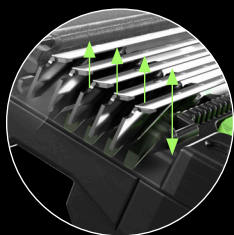
THE SCIENCE

Every day, dirt and natural secretions are deposited onto the surface of the skin. This debris can get in the way of your blade's path, preventing an optimal shave.

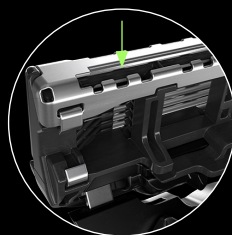
COMBINED WITH GILLETTE'S SIGNATURE 5-BLADED CARTRIDGE TECHNOLOGIES



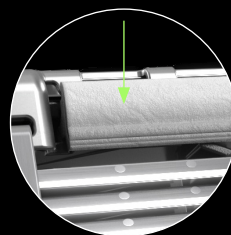
5 BLADES
for great comfort
and closeness



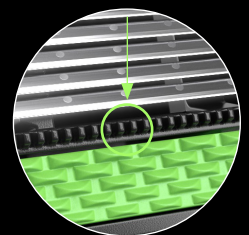
BLADES ON SPRINGS
Every blade is resting on
2 springs to help them
move up and down



**SINGLE
PRECISION BLADE**
at the back for tricky areas



LUBRICATING STRIP
releases lubricants to
help your razor glide
across your face



MICROCOMB
to help guide the
hairs to the blades